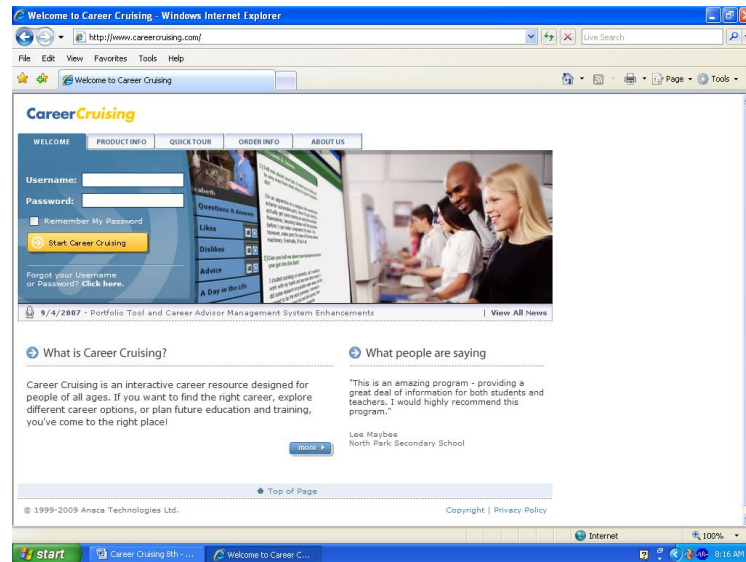


# Career Cruising

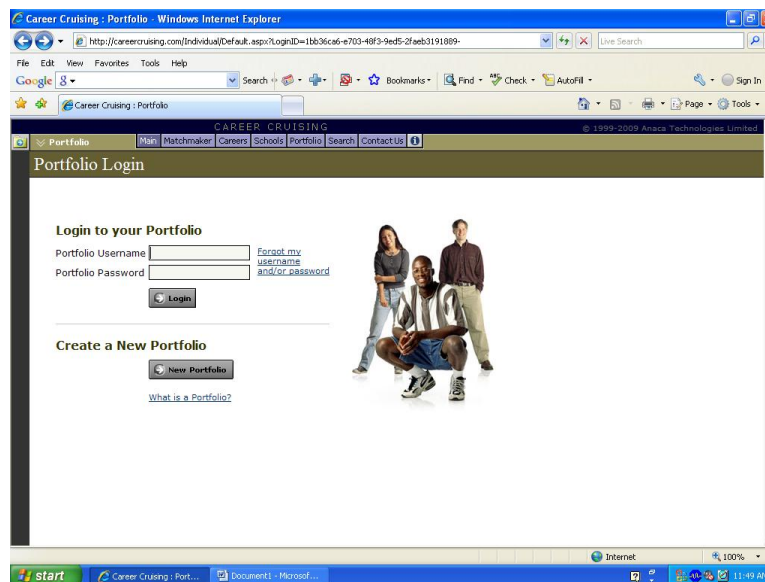
Go to the website: **www.careercruising.com**

Username: **pleasant**

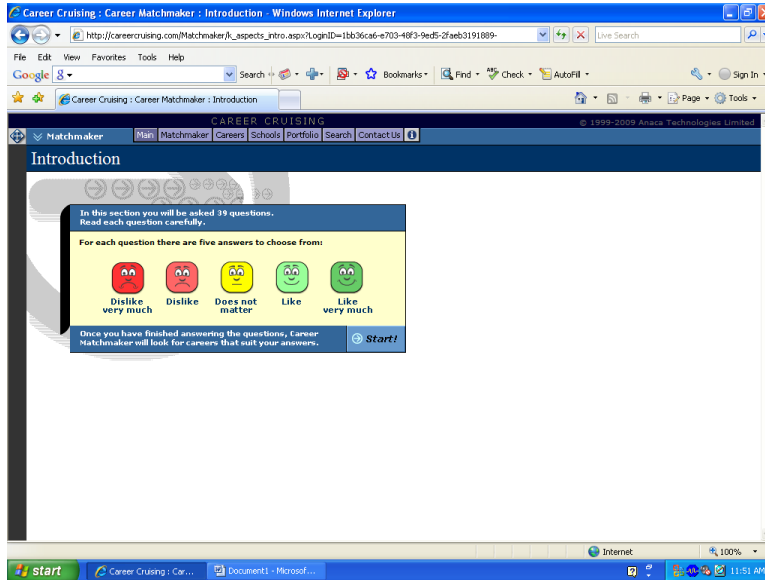
Password: **valley**



- 1) Student will logon to Career Cruising website and create a portfolio:
  - a. User Name: Your student Id followed by your initials (100100RS)
  - b. Password: Your school computer password
  - c. Write your user name and password down on paper provided



**Activity 1:** Click on Matchmaker and complete the 39 question assessment to get the most closely matched career suggestions.



List your three favorite careers and your three least favorite.

Favorite	Least Favorite



**Activity 2** – Complete the “My Skills” assessment which is 45 questions and save to your portfolio. This will tell you how your skills match up to your likes and dislikes.



Now list your top three careers and least favorite careers based upon your skills assessment.



Very Good Match/Good Match	Questionable Match/Poor Match

**Activity 3** – Select one career based upon the assessments you have completed.

Write 3-4 sentences on the job description from Career Cruising:

---

---

---

---

Write 3-4 sentences on the working conditions from that appear in Career Cruising:

---

---

---

---

What conditions do you like?

- 1) \_\_\_\_\_
- 2) \_\_\_\_\_
- 3) \_\_\_\_\_

What do you dislike about the working conditions?

---

---

What are the earnings for this career (round to thousands)?

**Salary in Pennsylvania**

<b>Entry</b>	<b>Median</b>	<b>Experienced</b>

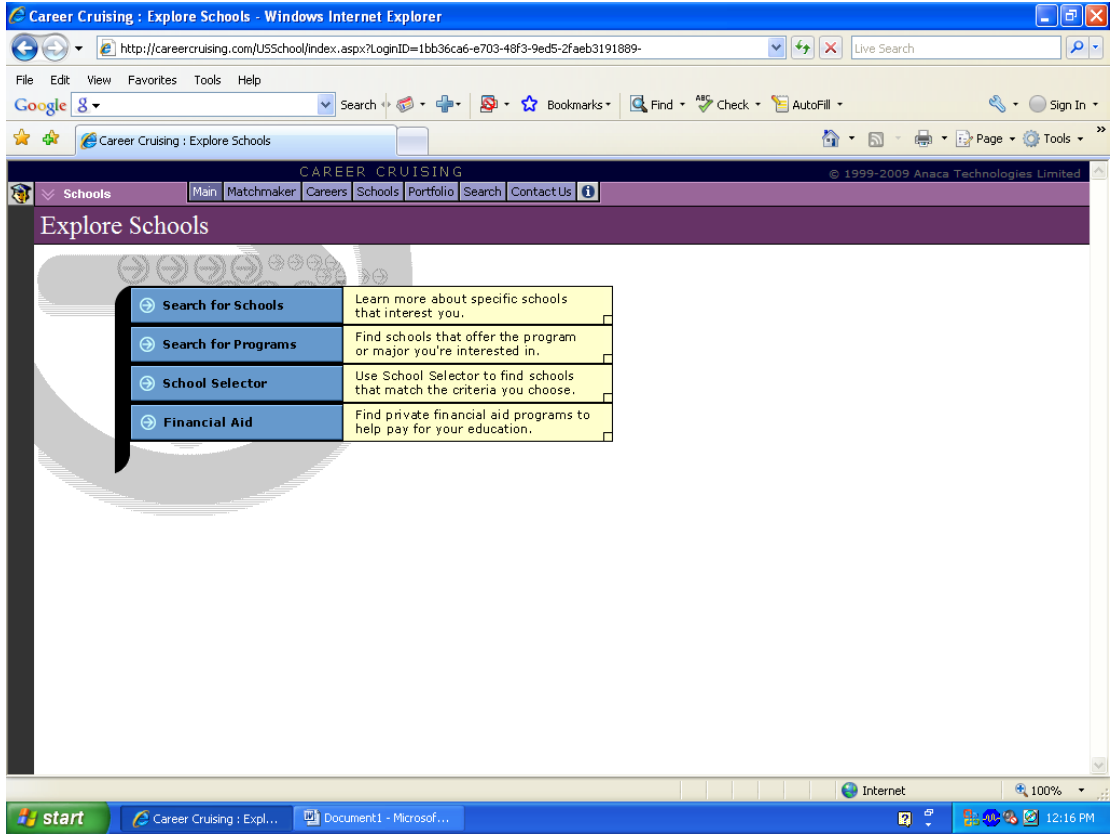
What are the annual openings expected in Pennsylvania? \_\_\_\_\_

**Salary in \_\_\_\_\_ (select another state)**

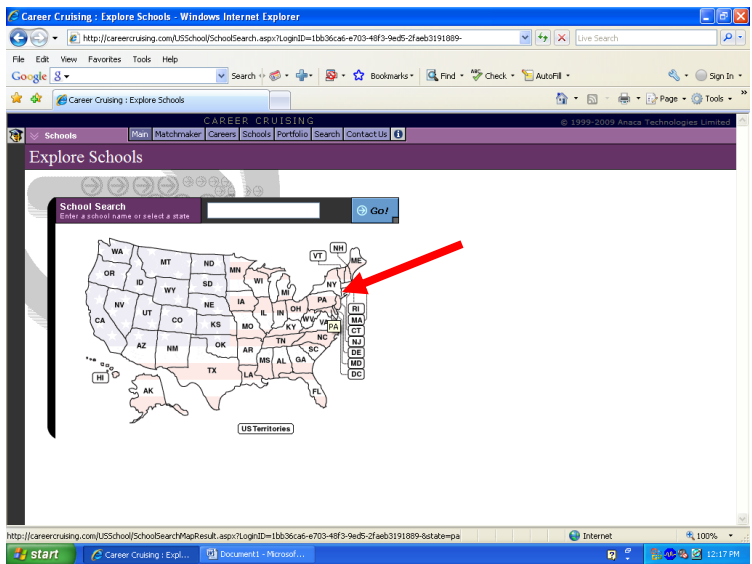
<b>Entry</b>	<b>Median</b>	<b>Experienced</b>

What are the annual openings expected in this state? \_\_\_\_\_

**Activity 4** – Education and Training: What type of education and/or training is required? (I.e. 2 year school, 4 year school, Technical School)

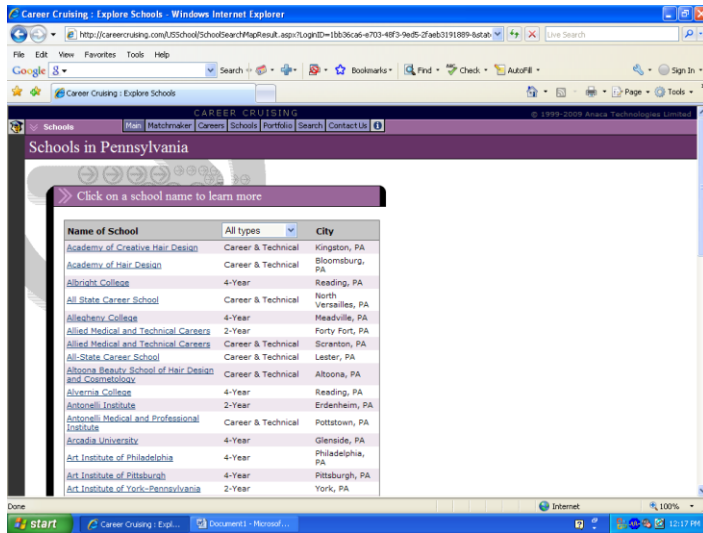


Use the state selection screen to find three colleges/technical schools to attend for your career in your two states.



Once you have your list of schools select three you would be interested in attending.

<b>Pennsylvania</b>	<b>Other State:</b>



Research one college/technical school and write your likes/dislikes below:

---



---



---



---

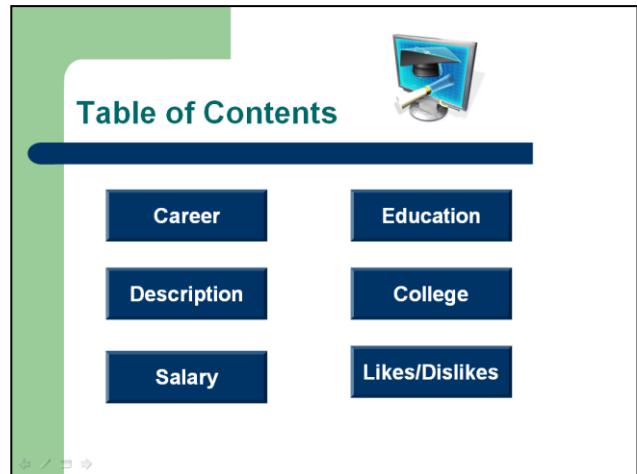
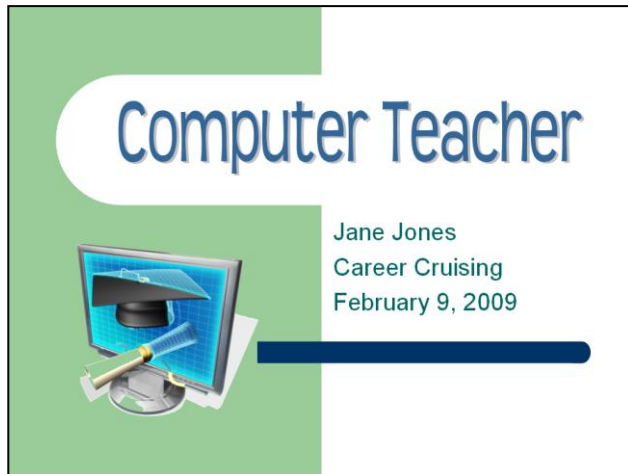
**Activity 5** –Create a Table in MS Word (7 Columns, 4 Rows, Landscape View)

<b>Career</b>	<b>Detailed Description</b>	<b>Salary</b>	<b>Education</b>	<b>College</b>	<b>Career Like</b>	<b>Career Dislike</b>

Include an appropriate graphic, your name in WordArt, and save it in your Career Cruising Portfolio, and print it out.

**Activity 6** – Select one Career to create a PowerPoint presentation. Include the information below. Use a background and put an image on every slide. You will be required to present your presentation to the class.

Slide 1 -Title Slide with Career in WordArt, as subtitle put your name, Career Cruising and date.



Slide 2- Table of contents with action buttons:

**Career**

**Education**

**Description**

**College of your choice**

**Salary**

**Likes/Dislikes**

Each action button should be linked to the appropriate slide.

Slide 3 – Career Choice

Slide 4 – Detailed Description

Slide 5 – Salary

Slide 6 – Education – what you need

Slide 7 - College of your choice

Slide 8 – Likes/Dislikes about the career